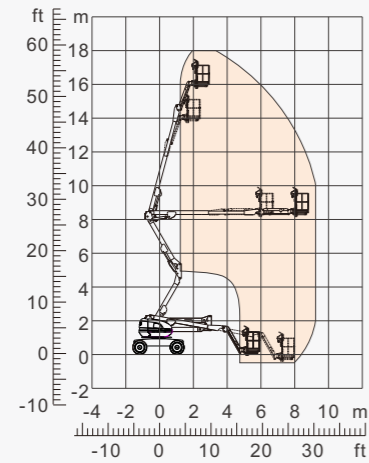


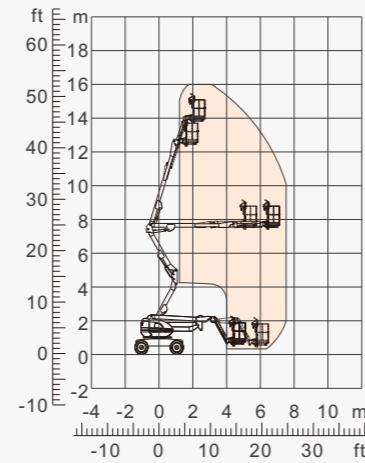


**Self-propelled Articulating Boom Lifts(Engine Types)**

The Maximum Working Height Covers 16-18m And The Maximum Load Is 230kg. As The Power Source, The Diesel Engine Has The Advantages Of Strong Power, Flexible Operation, Safe And Reliable Operation, Strong Spanning Ability And So On. It Is Suitable For The Working Place With Poor Environment.



GTBZ18A



GTBZ16A

Model	GTBZ18A	GTBZ16A
<b>Size</b>		
Max. Working Height	18.00m	16.00m
Max. Platform Height	16.00m	14.00m
Max. Horizontal Reach(+0.6m)	8.85m	7.47m
Up and Over Clearance	8.45m	7.67m
Overall Length(Stowed) <b>A</b>	7.59m	6.94m
Overall Length(Transport) <b>B</b>	5.80m	5.15m
Overall Width(Stowed) <b>C</b>	2.30m	
Overall Height(Stowed) <b>D</b>	2.48m	
Platform Size(Length×Width)	1.80m×0.76m	
Turntable Tailswing	0	
Ground Clearance	0.30m	
Wheelbase <b>E</b>	2.20m	
Turning Radius(Inside/Outside)	2.85m/3.46m	
Tyres	33×12-20	
<b>Performance</b>		
S.W.L	230kg	
Max. Occupants	2	
Gradeability	40%	
Travel Speed(Stowed)	6.1km/h	
Travel Speed(Raised)	1.1km/h	
Max.Working Slope	X-5°/Y-5°	
Turret Rotation	360 ° Continuous	
Platform Rotation	160°	
Jib Movement	+70°/-60°	
<b>Weight</b>		
Overall Weight	7835kg	7430kg
<b>Power</b>		
Diesel Engine	Kubota V2403 35kW	
Hydraulic Oil Tank	184L	

