



CE MODELS | SJ 46AJ SJ 51AJ



A-SERIES Articulating BOOM LIFTS

Skyjack's new A-SERIES Articulating Boom has been engineered utilising many of Skyjack's robust and reliable design features. The A-SERIES boom lifts are available in two configurations featuring the 46AJ and 51AJ models. Both models boast an industry leading, standard equipped, 360 degree continuous turret rotation. Zero tail swing compliments the turret design allowing for flexible operation in tight locations.

Superior positive traction and terrainability is provided by the axle based 4WD used in many of Skyjack product designs, which accounts for a proven low maintenance, rugged and reliable drive train. The AJ's are equipped

with a rear axle hydraulic differential lock/unlock switch allowing the operator to lock the rear differential when negotiating rough terrain. The unlocked position improves turning radius and reduces tire marks on hard surfaces.

Other key features include; direction sensing drive and steer controls, true vertical rise with riser function which prevents drifting forward or backwards, analog based controls and Skyjack's standard colour coded and numbered wiring system.

A-SERIES

Articulating Boom Lifts

| Dimensional Specifications | SJ 46AJ | SJ 51AJ |
|----------------------------|------------------------|-----------------|
| Platform Height | 14,15 m | 15,58 m |
| Horizontal Reach | 7,68 m | 9,16 m |
| Up and Over Height | 7,63 m | 7,63 m |
| Platform Size | 1,83 m x 0,76 m | 1,83 m x 0,76 m |
| Stowed Width | 2,24 m | 2,24 m |
| Tailswing | ZERO | ZERO |
| Stowed Height | 2,07 m | 2,07 m |
| Stowed Length | 6,50 m | 7,25 m |
| Wheelbase | 2,03 m | 2,03 m |
| Ground Clearance | 0,40 m | 0,40 m |
| Rotation | 360° Continuous | |
| Platform Rotation | 180° | 180° |
| Jib Length | 1,42 m | 1,42 m |
| Jib Range +/- | +70° / -75° | +70° / -75° |
| Weight | 6981 kg | 7316 kg |
| Gradeability | 45% | 45% |
| Turning Radius (Inside) | 2,48 m | 2,48 m |
| Turning Radius (Outside) | 5,15 m | 5,15 m |
| Axle Oscillation | 0,20 m | 0,20 m |
| Drive Speed (High speed) | 7,7 km/h | 7,7 km/h |
| Capacity | 227 kg | 227 kg |
| Maximum # of Persons | 2 | 2 |

STANDARD FEATURES

- Axle based 4WD system
- Operator controlled locking rear differential and limited slip front differential
- Oscillating axle
- Drivable at full height
- 360° continuous turret rotation
- 45% Gradeability
- 48 HP Deutz diesel engine
- Swing out engine tray
- Swing up cowlings
- Modular platform railing system
- Wiring for outlet on platform
- Direction sensing drive and steer controls
- Proportional controls
- Relay based control system
- Colour coded and numbered wiring
- Hourmeter
- Overload sensing system
- Operator horn
- Spring hinged gate
- Lanyard attachment points
- Tie down/lifting lugs
- Wet disc SAHR brakes (rear axle)
- 315/55 D20 grip lug foam-filled tyres

OPTIONS†

- 0,76 x 1,52 m Platform
- 3.5 kW generator (Includes hydraulic oil cooler)
- Cold weather start kit
- Diesel scrubber
- Hydraulic oil cooler
- Flashing light
- Platform work lights
- All motion alarm

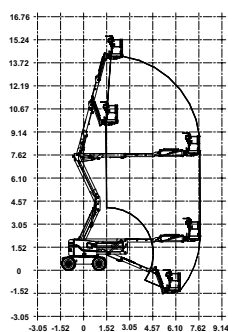
Tyre Options ‡

- Grip lug foam-filled non marking tyres

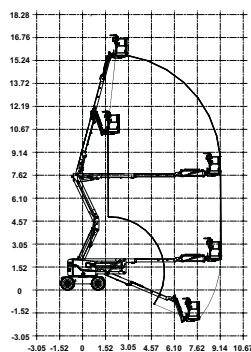
‡ Standard lead times may be increased when optional equipment is added, consult factory

** Capacities, and machine weights may differ when options are added

SJ 46AJ Reach Diagram



SJ 51AJ Reach Diagram



Skyjack UK

Unit 1, Maes-y-Clawdd
Maesbury Road Industrial Estate
Oswestry, Shropshire, SY10 8NN
Tel: +44 1691 676235
Fax: +44 1691 676239
Email: info@skyjackeurope.co.uk

www.skyjack.com

Skyjack AB (Sweden)

Marieholmogatan 2
415 02 Göteborg
Sweden
Tel: +46 31212245
Fax: +46 31212066

Skyjack SAS (France)

Lieudit Les Pretes
22 bis rue de l'avenir
38150 Chanas France
Tel: +33 474 20 30 20
Fax: +33 474 20 58 93

Skyjack Hebebühnen Gmbh (Germany)

Wullener Feld 27
D-58454 Witten
Tel: +49 2302 2026909
Fax: +49 2302 2025671

This brochure is for illustrative purpose only and based on the latest information at the time of printing. Skyjack Inc. reserves the right to make changes at any time, without notice, to specifications, standard and optional equipment. Consult the Operating Maintenance and Parts Manuals for proper procedures. CE marked work platforms are in conformance to Machinery Directive 2006/42/EC.

SKYJACK™